

HPE GREENLAKE FOR HCI SOLUTION BRIEF

Every organization wants to unleash the power of its data to drive digital transformation. But fragmented infrastructure complexity, manual processes across diverse environments across hybrid cloud, and infrastructure silos spanning edge to cloud are impeding data-driven innovation and agility and creating business risk.

Customers are looking for a radically simplified experience for data infrastructure at scale across the lifecycle—from streamlined device deployment to virtual machine (VM) provisioning, to a global VM and infrastructure management. They are looking for a cloud-native control plane that scales with infrastructure, so managing hundreds of systems across geographies is as simple as one.

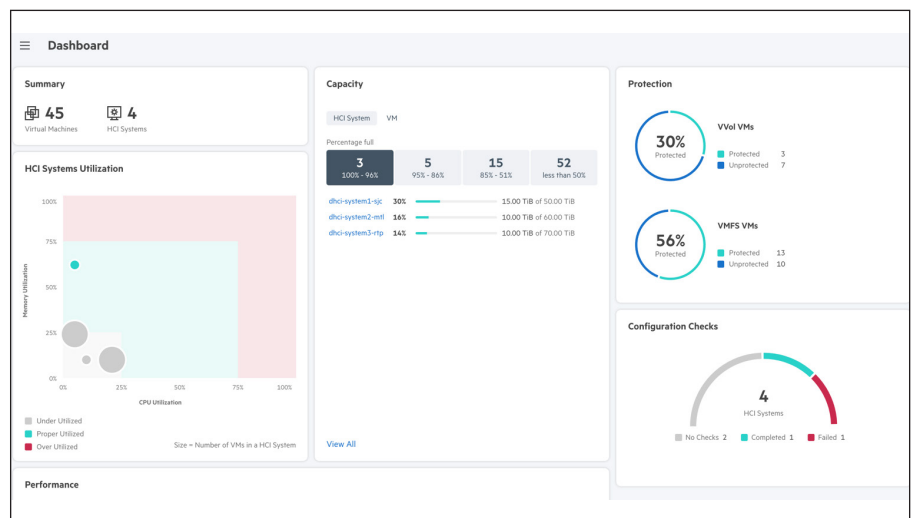


FIGURE 1. HPE GreenLake for HCI global dashboard

SIMPLIFY INFRASTRUCTURE OPERATIONS WITH CLOUD AGILITY

Hewlett Packard Enterprise provides HPE GreenLake for HCI delivering VMs across hybrid cloud, on demand. With this offering, customers can build their self-service cloud on demand when they need it and where they need it in data centers, at the edge, and beyond. HPE GreenLake for HCI changes the way customers procure and manage VMs with a cloud operational experience.

HPE GreenLake for HCI helps eliminate complexity with a unified cloud service for VM to infrastructure management, including public cloud VMs. The solution—delivered through the Data Services Cloud Console—enables global unified management and monitoring of VMs and infrastructure deployed at any location as well as 1-click, multi-site upgrades. This enables IT to reduce operating costs while helping optimize resource utilization, move to a generalist model, and shift from managing infrastructure to managing VMs and data, thereby refocusing resources and skills on higher-value strategic initiatives.

Solution brief

The VM-based cloud offering brings the agility of cloud operations and the ease of cloud ownership to apps and data everywhere. Build your cloud on demand where you need it, in your data center or at the edge, with a flexible, as-a-service offering. Shift for traditional VM and infrastructure ownership to flexibly consume hybrid cloud VMs with predictable monthly costs.

KEY FEATURES

Faster time to value: Self-service cloud management and blueprints to accelerate agility and speed deployments. HPE GreenLake for HCI abstracts the control and management plane from the underlying infrastructure to HPE GreenLake edge-to-cloud platform. It's multi-tenant, multicluster, and multisite aware. It provides cloud-managed infrastructure, which means you have everything you need at your fingertips to globally deploy, manage, upgrade, and optimize your entire fleet of VMs and infrastructure—wherever it is in the world—from any location and on any device. The cloud-native control plane scales autonomously with infrastructure, so managing hundreds of systems across geographies is as simple as managing one.

One-stop management: Single console for managing VMs across hybrid cloud, on demand. The solution streamlines VM to infrastructure management across hybrid cloud. Agile self-service is enabled from a single, global dashboard to give customers control. Automated provisioning of VMs and applications works from within the HPE GreenLake control plane.

Self-service as-a-service experience: Flexibly consume as a service, on demand. Shift from owning data infrastructure to simply accessing and utilizing it without heavy up-front costs. Easily get the HCI resources you need, faster with a workload-optimized solution—delivered to you. Customers gain a simplified, self-service experience with rapid attribute-based quoting and ordering based on the VM resources needed. While some managed services are not suitable for all needs, HPE GreenLake for HCI enables self-service through automation to simplify operations and transform faster. All this while maintaining control of your data on-premises.

Get time back with automation: Solves day 2 and beyond issues faster with industry-leading AI-managed, self-service resources; 86% of issues are resolved automatically.¹ To speed on-premises upgrades, the solution supports single- or multi-site, multisystem upgrades that save time and help eliminate complex lifecycle management across compute, storage, and hypervisor resources.

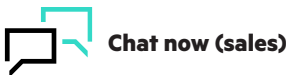
Built for business-critical apps: The solution is highly resilient with 99.9999% data availability guaranteed and leading performance.¹ HPE GreenLake for HCI leverages HPE compute, networking, and storage innovations with modern hypervisors and automation to support mixed VM workloads at scale. It's ideal for business-critical apps that need to be always on and always fast, and it meets business-critical and general-purpose app requirements for privacy, data location, and compliance.

Harness hybrid cloud data protection and VM mobility: To help with business continuity and managing risk, the service goes beyond resiliency with extra VM-centric data protection, rapid restore, and VM mobility for disaster recovery. Seamless data mobility helps ensure your hybrid cloud is protected.

LEARN MORE AT
hpe.com/us/en/greenlake/hyperconverged-infrastructure.html

¹ HPE storage substantiation

Make the right purchase decision.
Contact our presales specialists.



Get updates


**Hewlett Packard
Enterprise**

© Copyright 2022 Hewlett Packard Enterprise Development LP. The information contained herein is subject to change without notice. The only warranties for Hewlett Packard Enterprise products and services are set forth in the express warranty statements accompanying such products and services. Nothing herein should be construed as constituting an additional warranty. Hewlett Packard Enterprise shall not be liable for technical or editorial errors or omissions contained herein.

a50006471ENW